

ALE070 ADSL USB Modem

User's Manual

Copyright 2002 All rights reserved.

All rights reserved. No part of this publication may be reproduced in any form by any means without the prior written permission. Other trademarks or brand names mentioned herein are trademarks or registered trademarks of their respective companies.

February 2002, Revision 01

Contents

SAFETY INSTRUCTIONS.....	III
CHAPTER 1 BEFORE YOU BEGIN	1
1.1 Introduction.....	1
1.2 Features.....	1
1.3 Item Checklist	1
1.4 System Requirements	2
1.5 Collect Related Information	2
CHAPTER 2 HARDWARE INSTALLATION.....	3
2.1 Connecting Your Modem.....	3
CHAPTER 3 INSTALLATION/CONFIGURATION FOR WINDOWS 98/ME.....	5
3.1 Plug and Play Installation.....	5
3.1.1 For Windows 98.....	5
3.1.2 For Windows Me	10
3.2 Setup Program Installation	13
3.3 Configuration for Internet Access	14
3.3.1 LAN – Configuring TCP/IP Settings.....	14
3.3.2 WAN – Configuring Dial-Up Connection	17
CHAPTER 4 INSTALLATION/CONFIGURATION FOR WINDOWS 2000.....	19
4.1 Plug and Play Installation.....	19
4.2 Setup Program Installation	23
4.3 Configuration for Internet Access.....	24
4.3.1 LAN – Configuring TCP/IP Settings.....	24
4.3.2 WAN – Configuring Dial-Up Connection	26
CHAPTER 5 INSTALLATION/CONFIGURATION FOR WINDOWS XP	29
5.1 Plug and Play Installation.....	29
5.2 Setup Program Installation	32
5.3 Configuration for Internet Access.....	33
5.3.1 LAN – Configuring TCP/IP Settings.....	33
5.3.2 WAN – Configuring Dial-Up Connection	35
CHAPTER 6 CUSTOMIZE SETTINGS	37
CHAPTER 7 VERIFY YOUR CONNECTION.....	39
7.1 Link Status	39
7.2 DSL Modem Control Panel.....	40
CHAPTER 8 REMOVING AND UPGRADING DRIVER.....	43
8.1 Removing Driver.....	43
8.2 Upgrading Driver	44

CHAPTER 9 SPECIFICATION 47

 9.1 Hardware Specifications 47

 9.2 Software Specifications..... 47

APPENDIX COMPLIANCE..... 49

 FCC Regulations – Part 15 and 68 49

 IC (Industry Canada) Notice 49

Safety Instructions

Please read the following instructions carefully to prevent potential hazards.

1. Do not expose the product to rain, water, moisture or direct sunshine.
2. Do not spill liquid into the product.
3. Do not place near sources of heat such as heaters or radiators.
4. Do not attempt to disassemble or open covers of this unit yourself; otherwise it may expose you to dangerous voltage or other hazards and void the warranty.
5. Before cleaning, unplug the USB cable. Use a damp cloth for cleaning.
6. Proper ventilation is necessary to prevent the product from overheating.
7. For better performance, put away from television and PC's monitor (e.g., do not put the ADSL modem on the monitor).

1.1 Introduction

The ALE070 ADSL (Asymmetric Digital Subscriber Line) USB Modem uses existing twisted-pair phone lines through POTS (Plain Old Telephone System) to deliver high-speed access to the Internet. ADSL technology is quickly solving the bandwidth problem, allowing lightning-fast transmission of data, voice and image. At the same time, the POTS splitterless design saves your money on hardware and installation costs.

1.2 Features

- Easy installation and configuration
- Compliant with ANSI T1.413 issue 2 , G.dmt and G.lite
- Up to 8 Mbps downstream and at least 640 Kbps upstream for full-rate operation.

Note: The actual rate depends on the copper category of your telephone wire, distance from the central office and the type of ADSL service subscribed to. Also, if other USB devices are attached to your computer sharing the fixed bandwidth of USB controller, the performance of the ALE070 modem will be slightly influenced and thus effects the actual speed.

- Hot plug-in and hot plug-off
- Supports POTS and ADSL simultaneously
- USB bus powered, no external power adapter required.
- Includes a Microsoft Windows control panel monitoring program for configuring the adapter and checking the status of the connection.

1.3 Item Checklist

Before installation, please check the items of your package. The package should include the following items:

- ALE070 ADSL USB Modem
- One Phone Cord
- One USB Cable
- Quick Installation Guide
- Installation CD
- Splitter (optional depending on your ISP)

If any of the above items is missing, please contact your supplier.

1.4 System Requirements

Before installation, please check the following requirements with your equipment:

- Pentium II 233 or above
- At least 32 MB RAM (64 MB recommended)
- Windows 98[®]/Me[®]/2000[®]/XP[®]
- Available USB port
- CD-ROM drive
- 20 Mbytes available hard disk or more
- Subscription to an ADSL service provider
- Windows 98 Installation CD, which will be prompted for during installation.

1.5 Collect Related Information

Prior to installing the driver, consult with your ISP or system administrator about the connection type and collect related information. You will be prompted for these information during installation.

Connection Type	Encapsulation and Multiplexing method	Network Information
LAN	RFC 1577 Classical IPoATM RFC 1483 IPoATM Bridged LLC Encapsulation RFC 1483 IPoATM Bridged VC Encapsulation RFC 1483 IPoATM Routed LLC Encapsulation RFC 1483 IPoATM Routed VC Encapsulation	TCP/IP information: <ul style="list-style-type: none"> • IP address • Subnet mask • DNS • Gateway
WAN	RFC 2364 PPPoATM LLC Encapsulation RFC 2364 PPPoATM NULL Encapsulation RFC 2516 PPPoE Encapsulation	Internet Account information: <ul style="list-style-type: none"> • User name • Password

In addition, you need the following information:

- Modulation (Transmission Standards):
 - T1.413
 - Multimode
 - G.Lite
 - G.DMT
- The values of VPI and VCI

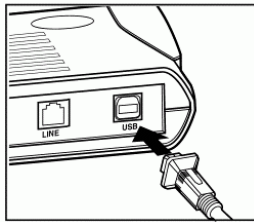
Chapter 2

Hardware Installation

For safety, before installing and uninstalling your ALE070 ADSL USB Modem, please make sure the telephone line is unplugged from your modem.

2.1 Connecting Your Modem

- Step 1 Plug the USB cable connected to your PC into the USB port of the ADSL modem .



Important Notes on Attaching Other USB Devices

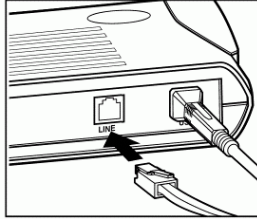
If you are going to attach other USB devices, such as USB mouse, keyboard or hub, please plug them to your PC first before connecting the ALE070 modem. Otherwise, the pre-attached ALE070 modem will consume a fixed bandwidth and the remaining bandwidth will be not enough for other USB devices.

If this is the case, you will see an error message warning you that the USB controller bandwidth is exceeded. The additional USB device may not function properly.

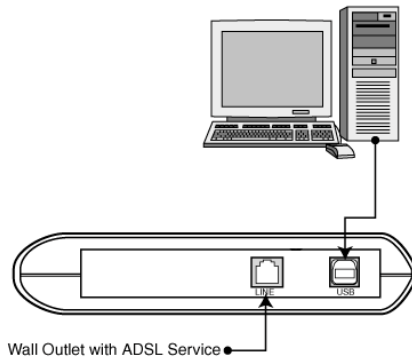
For example, your ALE070 modem is attached already and you need to add an USB mouse to your PC. In this case:

1. Unplug the AL070 modem to release the bandwidth.
2. Plug the USB mouse to your PC and then re-plug the ALE070 modem. The ALE070 modem will adjust to use the remaining bandwidth.

- Step 2 Plug one end of the phone cord into the **LINE** port on the ALE070 modem, and plug the other end into the wall outlet with ADSL service.



The diagram below illustrates the typical ALE070 ADSL USB modem connection:



Chapter 3

Installation/Configuration for Windows 98/Me

After hardware installation and starting your PC, the Windows Plug and Play function will discover the ALE070 ADSL USB modem and display the wizard screen. You may follow the Plug and Play instructions or run the setup program (refer to “3.2 Setup Program Installation”) to finish the driver and software installation.

3.1 Plug and Play Installation

3.1.1 For Windows 98

- Step 1 Windows system will automatically detect the ALE070 modem installed in your computer. When **Add New Hardware Wizard** window announces detecting of the **USB Device**, click **Next**.

Note: If the wizard window below is not displayed, make sure your PC is connected with your ALE070 modem.



- Step 2 Select **Search for the best driver for your device**, then click **Next**.



- Step 3 Insert the Installation CD into your CD-ROM drive. Check **CD-ROM drive** and click **Next**.



- Step 4 When the **Add New Hardware Wizard** finds the driver, click **Next**.

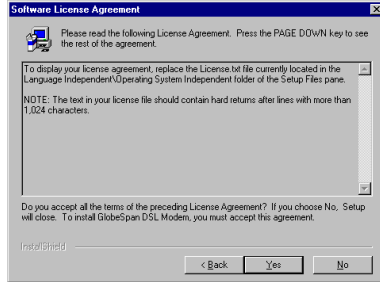
- Step 5 When Windows has finished installing the software required, click **Finish**.



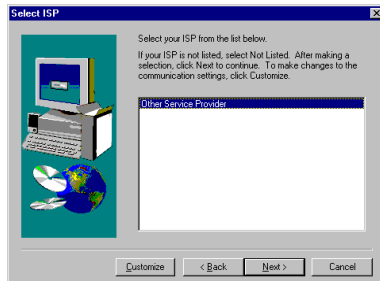
- Step 6 When prompted with **Welcome** window, click **Next**.



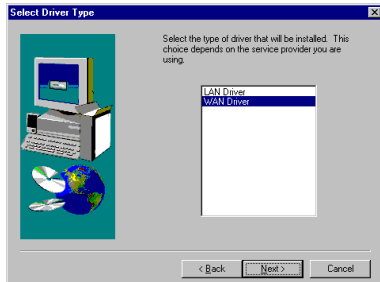
Step 7 Click **Yes** to accept the **Software License Agreement**.



Step 8 With **Other Service Provider** selected, click **Next** to continue.



Step 9 Highlight the type of driver specified by your ISP and click **Next**.

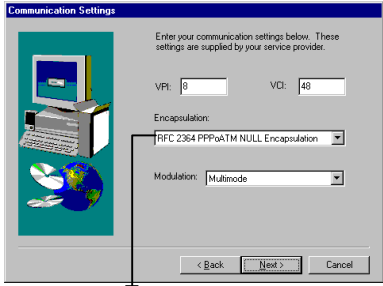


Step 10 Enter the communication settings specified by your ISP:

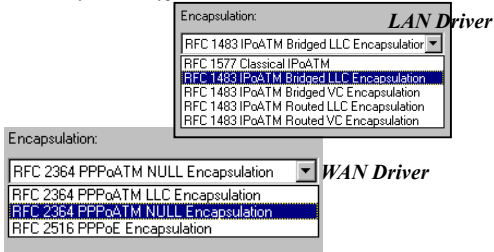
- Do not change the default **VPI** and **VCI** values recommended by your ISP unless instructed.
- Select a required **Encapsulation** type. The options will vary according to the driver type you selected on preceding step.
- Select a **Modulation** type from *T1.413*, *Multimode*, *G.Lite* or *G.DMT*.

When done with the necessary settings, click **Next** to continue.

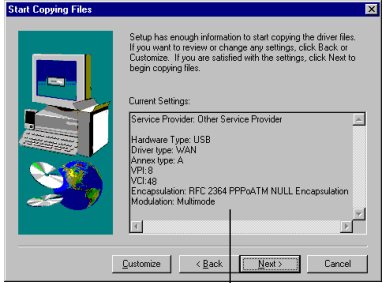
Note: If you are unsure about the communication settings, contact your ISP to obtain required information.



The options for **Encapsulation** will vary according to your driver type.

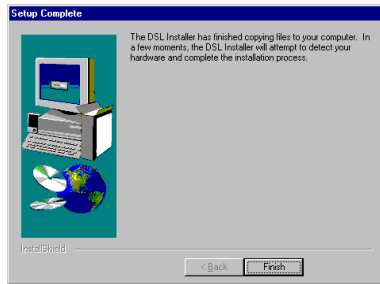


Step 11 You will be prompted to confirm the settings prior to copying files. If the current settings on the list below are correct, click **Next**. Otherwise, click **Back** to reset.



The current settings vary according to your settings previously.

- Step 12 Wait for the system copying files to your computer. When completed, click **Finish**.

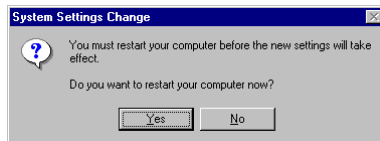


- Step 13 When prompted with Windows 98 CD, click **OK**. Then type in the path to Windows 98 installation files and click **OK**.

Note: If Windows 98 files are not in your hard disk, you will need to remove the installation CD from your CD-ROM drive and then insert Windows 98 CD.



- Step 14 When prompted, click **Yes** to restart your computer.



Now, you are done with the driver installation. Please proceed to next chapter for configuration.

For LAN users, go to “3.3.1 LAN – Configuring TCP/IP Settings” on page 14.

For WAN users, go to “3.3.2 WAN – Configuring Dial-Up Connection” on page 17.

3.1.2 For Windows Me

- Step 1 Windows system will automatically detect the new hardware **USB Device** in your computer. Insert the Installation CD into your CD-ROM drive. Select **Automatic search for a better driver...** and then click **Next**.

Note: If the wizard window below is not displayed, make sure your PC is connected with your ALE070 modem.

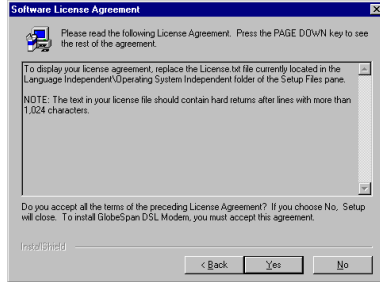
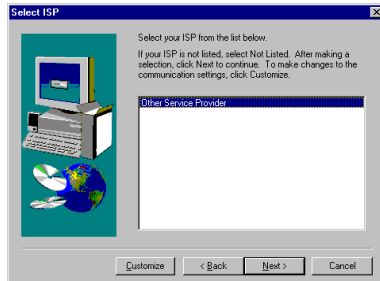
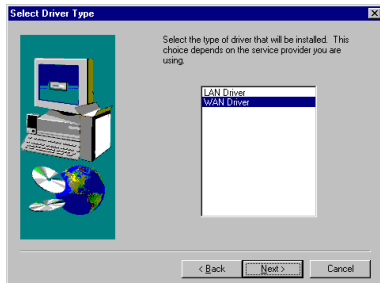


- Step 2 When Windows has finished installing the new device, click **Finish**.



- Step 3 When **Welcome** window appears, click **Next**.



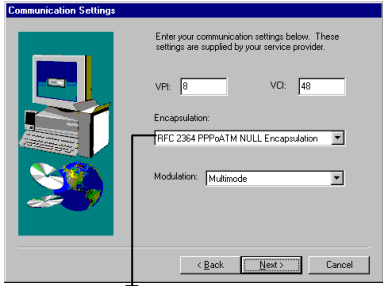
Step 4 Click **Yes** to accept **Software License Agreement** .Step 5 With **Other Service Provider** selected, click **Next** to continue.Step 6 Highlight the type of driver specified by your ISP and click **Next**.

Step 7 Enter the communication settings specified by your ISP:

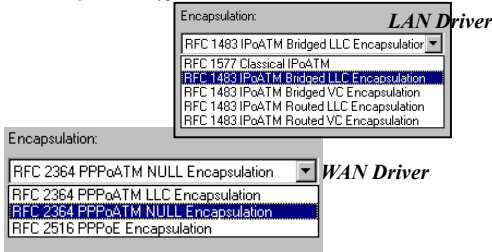
- Do not change the default **VPI** and **VCI** values recommended by your ISP unless instructed.
- Select a required **Encapsulation** type. The options will vary according to the driver type you selected on preceding step.
- Select a **Modulation** type from *T1.413*, *Multimode*, *G.Lite* or *G.DMT*.

When done with the necessary settings, click **Next** to continue.

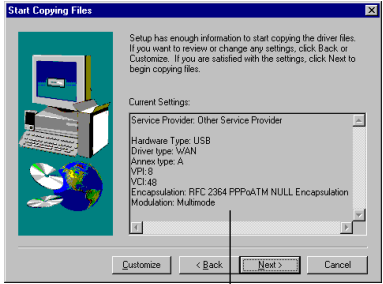
Note: If you are unsure about the communication settings, contact your ISP to obtain required information.



The options for **Encapsulation** will vary according to your driver type.

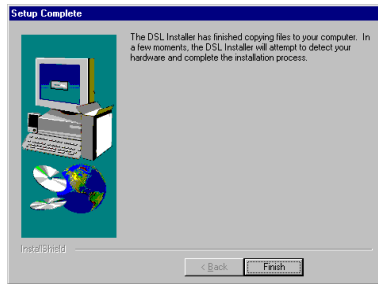


Step 8 You will be prompted to confirm the settings prior to copying files. If the current settings on the list below are correct, click **Next**. Otherwise, click **Back** to reset.

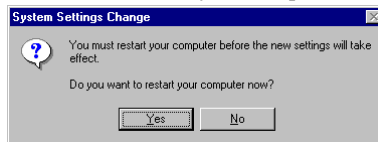


The current settings vary according to your settings previously.

- Step 9 Wait for the system copying files to your computer. When completed, click **Finish**.



- Step 10 Click **Yes** to restart your computer.



Now, you are done with the driver installation. Please proceed to next chapter for configuration.

For LAN users, go to “3.3.1 LAN – Configuring TCP/IP Settings” on page 14.

For WAN users, go to “3.3.2 WAN – Configuring Dial-Up Connection” on page 17.

3.2 Setup Program Installation

To directly run the driver/software installation program enclosed in the Installation CD, please click **Cancel** to bypass the Plug and Play screen. Insert the Installation CD into your CD-ROM drive. Then run the installation program **setup.exe** from the root directory of the provided CD to start the installation sequence. When **Welcome** screen appears, follow the on-screens instructions to finish installation.

3.3 Configuration for Internet Access

Note: The configuration steps are the same in Windows 98 and Windows Me. The graphics here assume a Windows 98 environment.

3.3.1 LAN – Configuring TCP/IP Settings

Before configuration, your system must have TCP/IP installed. Follow the steps below to check if there is TCP/IP protocol installed.

Step 1 Click on the **Start** menu, point to **Settings** and click on **Control Panel**.

Step 2 Double-click the **Network** icon.

Step 3 Click the **Configuration** tab.

Option 1: If you already have TCP/IP installed, proceed to Step 7 for configuration.

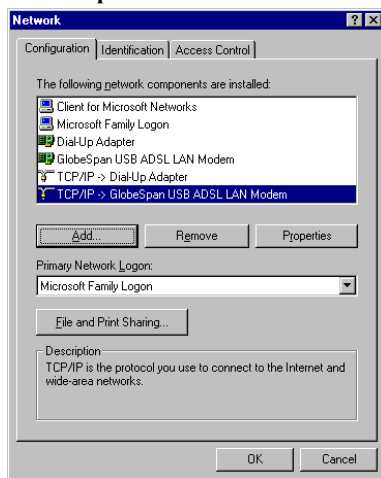
Option 2: If you do not have TCP/IP installed, proceed to Step 4 to install TCP/IP.

Step 4 From the **Configuration** tab in the **Network** window, click **Add**.

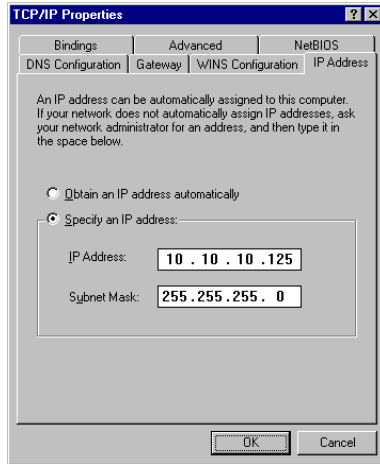
Step 5 Highlight **Protocol** and click **Add**.

Step 6 On the left side of the windows, highlight **Microsoft** and then select **TCP/IP** on the right side. Then click **OK**.

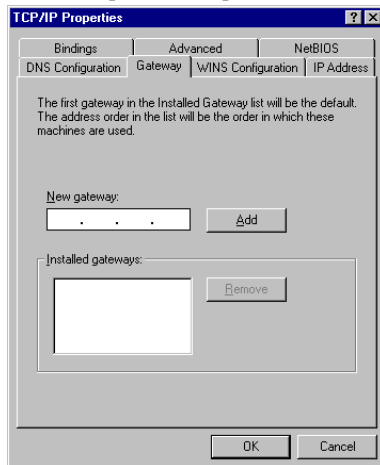
Step 7 Highlight **TCP/IP -> GlobeSpan USB ADSL LAN Modem** and click **Properties**.



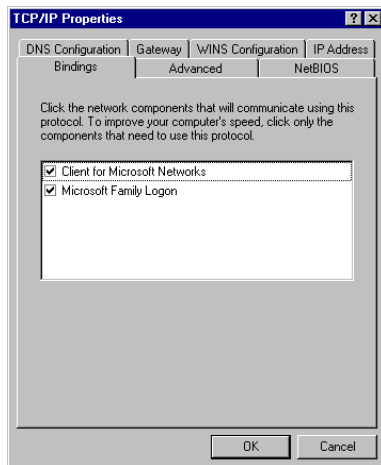
- Step 8 On the **IP Address** tab, enable **Specify an IP address** option. Enter the **IP Address** (e.g., 10.10.10.125) and **Subnet Mask** (e.g., 255.255.255.0) provided by your ISP.



- Step 9 Select **Gateway** tab. Enter your gateway information into **New gateway** box and click **Add**. If you have more than one gateway address, repeat this step.

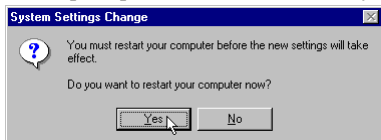


- Step 10 Select the **Bindings** tab. Ensure that **Client for Microsoft Networks** is enabled (marked with a check in the box to the left). Click **OK**.



- Step 11 After completing filling all necessary information for TCP/IP properties, click **OK**.

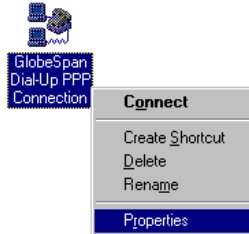
- Step 12 When prompted, click **Yes** to restart your computer.



After restarting your computer, you are ready to access the Internet. You may start your application, e.g., a Web browser or E-mail application for the Internet access.

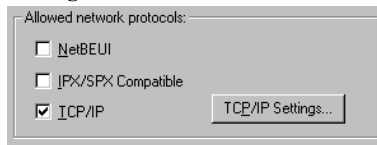
3.3.2 WAN – Configuring Dial-Up Connection

- Step 1 From your desktop, double-click **My Computer** and then **Dial-Up Networking**. Right-click **GlobeSpan Dial-Up PPP Connection** icon and click **Properties**.

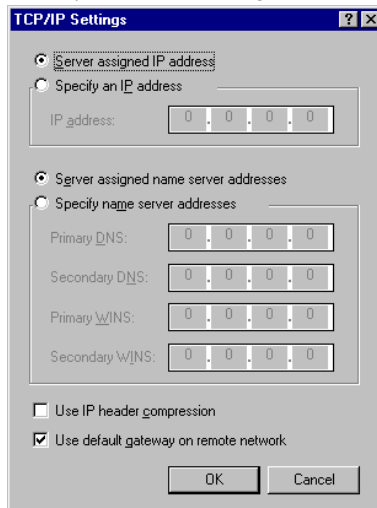


Note: If you are prompted with **Location Information** screen, enter your area code and then exit the screen.

- Step 2 Click **Server Types** (for Windows 98) / **Networking** (for Windows Me) tab; ensure that **TCP/IP** box is checked. Then click **TCP/IP Settings**.



- Step 3 Check your TCP/IP settings as below and click **OK**.



- Step 4 Return to the **Dial-Up Networking** window. Double-click the **GlobeSpan Dial-Up PPP Connection** icon.



- Step 5 Enter the **User name** and **Password** provided by your ISP. Click **Connect**.



Windows Me



Once the connection is established, you are ready to access the Internet. You may start your application, e.g., a Web browser or E-mail application for Internet access.

Chapter 4

Installation/Configuration for Windows 2000

After hardware installation and starting your PC, the Windows Plug and Play function will discover the ALE070 ADSL USB modem and display the wizard screen. You may follow the Plug and Play instructions or run the setup program (refer to “4.2 Setup Program Installation”) to finish the driver and software installation.

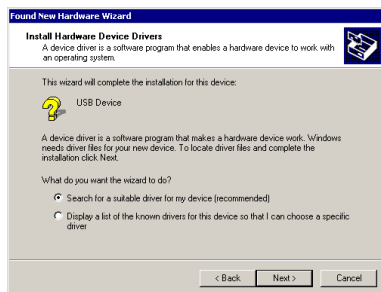
4.1 Plug and Play Installation

Step 1 Start Windows 2000. When **Found New Hardware Wizard** windows appear, click **Next**.

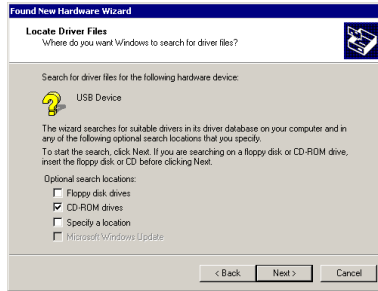
Note: If the wizard window below is not displayed, make sure your PC is connected with your ALE070 modem.



Step 2 The system detects the new hardware **USB Device**. Select **Search for a suitable device...** and click **Next**.



- Step 3 When prompted where to search the driver files, insert the Installation CD into your CD-ROM drive. Select **CD-ROM drives** and click **Next**.

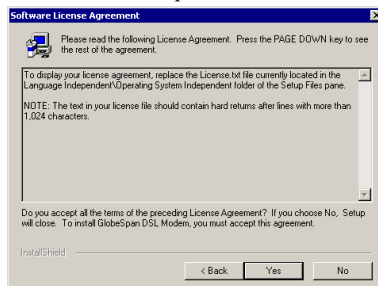


- Step 4 When the **Found New Hardware Wizard** finds the driver, click **Next**.

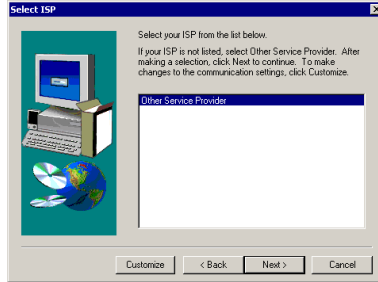
- Step 5 When prompted with **Welcome** window, click **Next**.



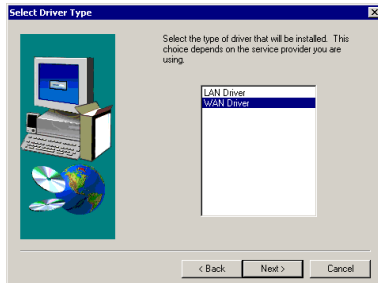
- Step 6 Click **Yes** to accept the **Software License Agreement**.



Step 7 With **Other Service Provider** selected, click **Next** to continue.



Step 8 Highlight the type of driver specified by your ISP and click **Next**.

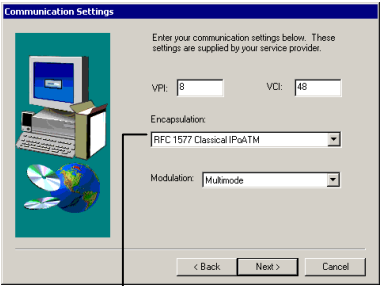


Step 9 Enter the communication settings specified by your ISP:

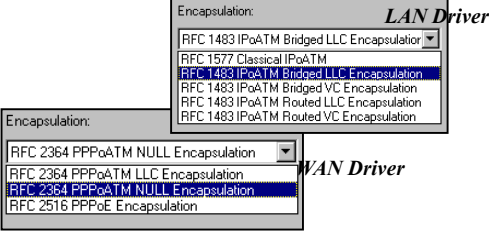
- Do not change the default **VPI** and **VCI** values recommended by your ISP unless instructed.
- Select a required **Encapsulation** type. The options will vary according to the driver type you selected on preceding step.
- Select a **Modulation** type from *T1.413*, *Multimode*, *G.Lite* or *G.DMT*.

When done with the necessary settings, click **Next** to continue.

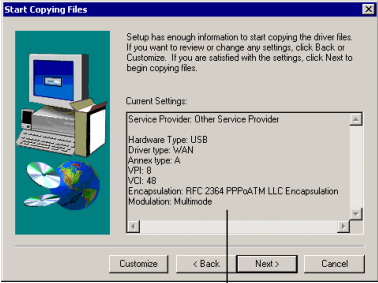
Note: If you are unsure about the communication settings, contact your ISP to obtain required information.



The options for **Encapsulation** will vary according to your driver type.



Step 10 You will be prompted to confirm the settings prior to coping files. If the current settings on the list below are correct, click **Next**. Otherwise, click **Back** to reset.



The current settings vary according to your settings previously.

Step 11 Click **Finish** and wait for the system to complete the installation.



Now, you are done with the driver installation. Please proceed to next chapter for configuration.

For LAN users, go to “4.3.1 LAN – Configuring TCP/IP Settings” on page 24.

For WAN users, go to “4.3.2 WAN – Configuring Dial-Up Connection” on page 26.

4.2 Setup Program Installation

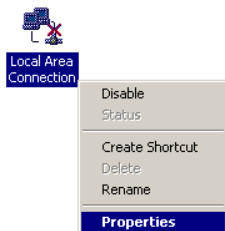
To directly run the driver/software installation program enclosed in the Installation CD, please click **Cancel** to bypass the Plug and Play screen. Insert the Installation CD into your CD-ROM drive. Then run the installation program **setup.exe** from the root directory of the provided CD to start the installation sequence. When **Welcome** screen appears, follow the on-screens instructions to finish installation.

4.3 Configuration for Internet Access

4.3.1 LAN – Configuring TCP/IP Settings

Before configuration, your system must have TCP/IP installed. Follow the steps below to check if there is TCP/IP protocol installed.

- Step 1 From your desktop, double-click **My Computer** > **Control Panel** > **Network and Dial-up Connections**. Right-click **Local Area Connection** icon, and select **Properties** on its menu.

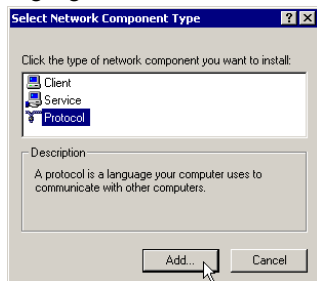


- Step 2 On the **General** tab, check out the list of installed network components.

Option 1: If you have **no** TCP/IP Protocol, click **Install**.

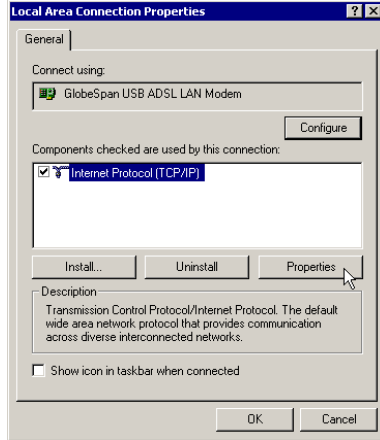
Option 2: If you have TCP/IP Protocol, go to Step 5.

- Step 3 Highlight **Protocol** and then click **Add**.



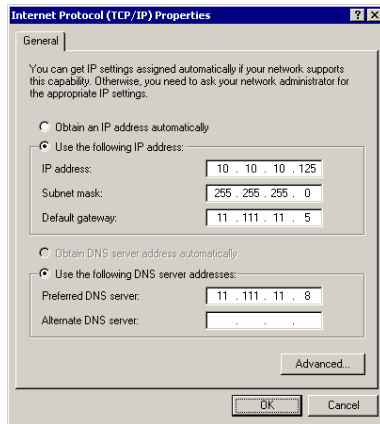
- Step 4 Select **Internet Protocol(TCP/IP)** from the list and then click **OK**.

- Step 5 Highlight **Internet Protocol (TCP/IP)** and then click **Properties**.



- Step 6 Under the **General** tab, enable **Use the following IP Address**. Enter the **IP address** (e.g., 10.10.10.125), **Subnet Mask** (e.g. 255.255.255.0) and **Default gateway** (e.g., 11.111.11.5). If necessary, enter the DNS server address given by your ISP. Then click **OK**.

Note: If you are unsure about the TCP/IP settings, contact your ISP to obtain required information.

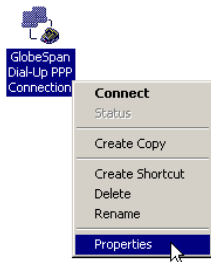


- Step 7 Close the **Local Area Connection Properties** window. When prompted to restart your computer, click **Yes**.

After restarting your computer and the connection is established, you are ready to access the Internet. You may start your application, e.g., a Web browser or E-mail application for the Internet access.

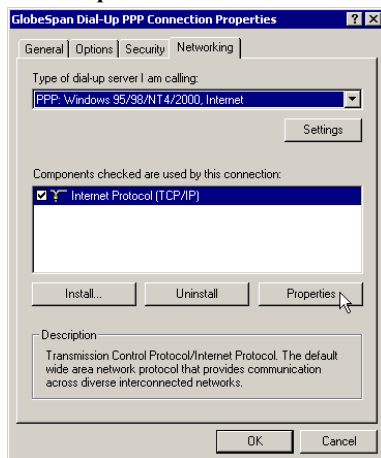
4.3.2 WAN – Configuring Dial-Up Connection

- Step 1 From your desktop, double-click **My Computer > Control Panel > Network and Dial-up Connections**. Right-click **GlobeSpan Dial-Up PPP Connection** icon and click **Properties**.

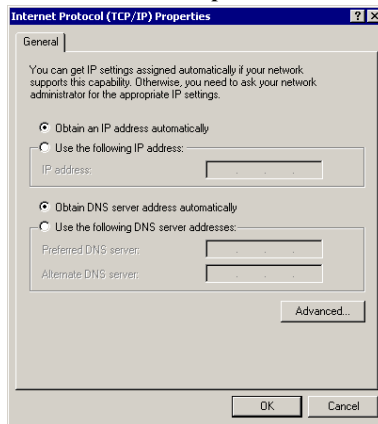


Note: If you are prompted with **Location Information** screen, enter your area code and then exit the screen.

- Step 2 On **Networking** tab, highlight **Internet Protocol (TCP/IP)** and click **Properties**.



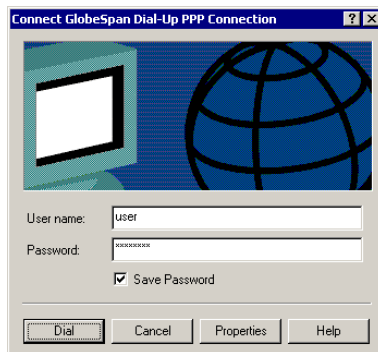
- Step 3 Check your TCP/IP settings as below and click **OK**. Return to **Network and Dial-up Connections** window.



- Step 4 Double-click the **GlobeSpan Dial-Up PPP Connection** icon.



- Step 5 Enter the **User name** and **Password** provided by your ISP. Click **Dial**.



When the connection is established, you are ready to access the Internet. You may start your application, e.g., a Web browser or E-mail application for the Internet access.

Chapter 5

Installation/Configuration for Windows XP

After hardware installation and starting your PC, the Windows Plug and Play function will discover the ALE070 ADSL USB modem and display the wizard screen. You may follow the Plug and Play instructions or run the setup program (refer to “5.2 Setup Program Installation”) to finish the driver and software installation.

5.1 Plug and Play Installation

Step 1 Windows system will automatically detect the new hardware **USB Device** in your computer. When **Found New Hardware Wizard** windows appear, insert the Installation CD into your CD-ROM drive. Select **Install the software automatically...** and click **Next**.

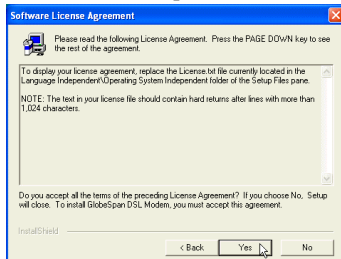
Note: If the wizard window below is not displayed, make sure your PC is connected with your ALE070 modem.



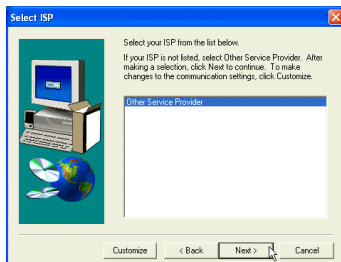
Step 2 When prompted with **Welcome** window, click **Next**.



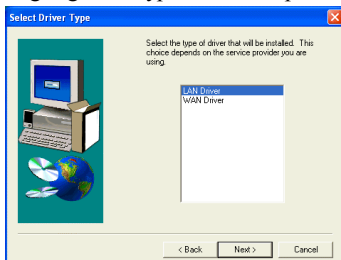
Step 3 Click **Yes** to accept the **Software License Agreement**.



Step 4 With **Other Service Provider** selected, click **Next** to continue.



Step 5 Highlight the type of driver specified by your ISP and click **Next**.

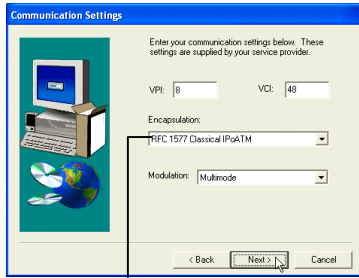


Step 6 Enter the communication settings specified by your ISP:

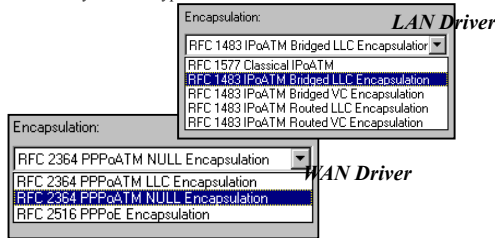
- Do not change the default **VPI** and **VCI** values recommended by your ISP unless instructed.
- Select a required **Encapsulation** type. The options will vary according to the driver type you selected on preceding step..
- Select a **Modulation** type from *T1.413*, *Multimode*, *G.Lite* or *G.DMT*.

When done with the necessary settings, click **Next** to continue.

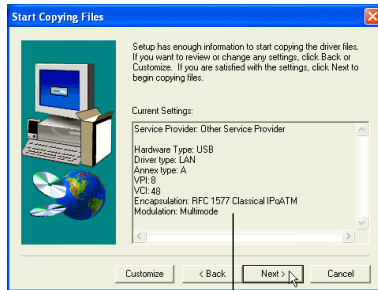
Note: If you are unsure about the communication settings, contact your ISP to obtain required information.



The options for **Encapsulation** will vary according to your driver type.

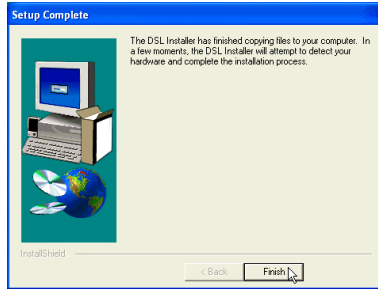


- Step 7** You will be prompted to confirm the settings prior to coping files. If the current settings on the list below are correct, click **Next**. Otherwise, click **Back** to reset.



The current settings vary according to your settings previously.

Step 8 Click **Finish** and wait for the system to complete the installation.



Now, you are done with the driver installation. Please proceed to next chapter for configuration.

For LAN users, go to “5.3.1 LAN – Configuring TCP/IP Settings” on page 33.

For WAN users, go to “5.3.2 WAN – Configuring Dial-Up Connection” on page 35.

5.2 Setup Program Installation

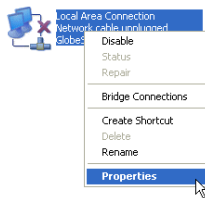
To directly run the driver/software installation program enclosed in the Installation CD, please click **Cancel** to bypass the Plug and Play screen. Insert the Installation CD into your CD-ROM drive. Then run the installation program **setup.exe** from the root directory of the Installation CD to start the installation sequence. When **Welcome** screen appears, follow the on-screens instructions to finish installation.

5.3 Configuration for Internet Access

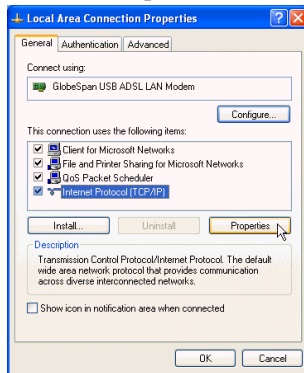
5.3.1 LAN – Configuring TCP/IP Settings

Before configuration, your system must have TCP/IP installed. Follow the steps below to check if there is TCP/IP protocol installed.

- Step 1 From your desktop, double-click **My Computer** > **Control Panel** > **Network Connections**. Right-click **Local Area Connection** icon, and select **Properties** on its menu.

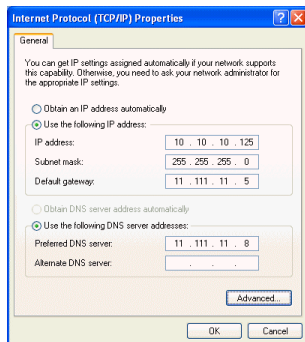


- Step 2 On the **General** tab, highlight **Internet Protocol (TCP/IP)** and then click **Properties**.



- Step 3 Under the **General** tab, enable **Use the following IP Address**. Enter the **IP address** (e.g., 10.10.10.125), **Subnet Mask** (e.g. 255.255.255.0) and **Default gateway** (e.g., 11.111.11.5). If necessary, enter the DNS server address given by your ISP. Then click **OK**.

Note: If you are unsure about the TCP/IP settings, contact your ISP to obtain required information.



- Step 4 Close the **Local Area Connection Properties** window.

When the connection is established, you are ready to access the Internet. You may start your application, e.g., a Web browser or E-mail application for the Internet access.

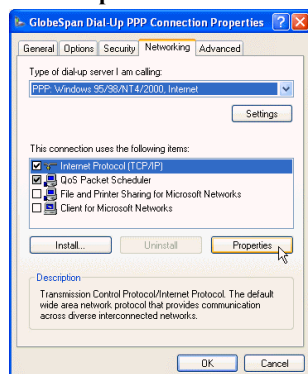
5.3.2 WAN – Configuring Dial-Up Connection

- Step 1 From your desktop, double-click **My Computer** > **Control Panel** > **Network Connections**. Right-click **GlobeSpan Dial-Up PPP Connection** icon and click **Properties**.

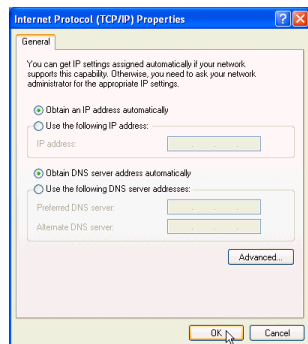


Note: If you are prompted with **Location Information** screen, enter your area code and then exit the screen.

- Step 2 On **Networking** tab, highlight **Internet Protocol (TCP/IP)** and click **Properties**.



- Step 3 Check your TCP/IP settings as below and click **OK**. Return to **Network Connections** window.



Step 4 Double-click the **GlobeSpan Dial-Up PPP Connection** icon.



Step 5 Enter the **User name** and **Password** provided by your ISP. Click **Dial**.



When the connection is established, you are ready to access the Internet. You may start your application, e.g., a Web browser or E-mail application for the Internet access.

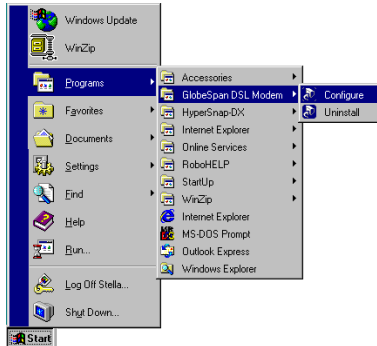
Chapter 6

Customize Settings

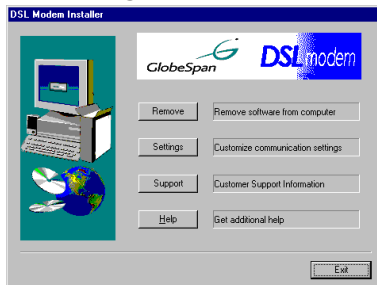
If you need to re-configure the ALE070 ADSL USB modem settings, e.g., VPI/VCI values, encapsulation or modulation type, following the steps described in this chapter. Note that do not modify the ALE070 modem settings unless instructed by your ISP. Make sure to contact your ISP prior to making any changes.

Note: If your connection type is changed from LAN to WAN (or vice versa), you should remove the driver first and then re-install the required driver.

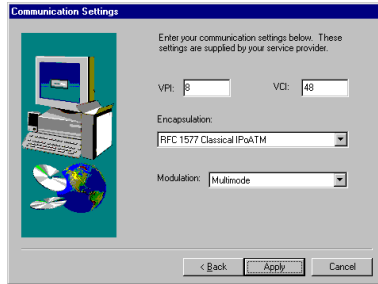
Step 1 Click **Start > Programs > GlobeSpan DSL Modem > Configure**.



Step 2 Click **Settings**.



- Step 3 Set the proper value of **VPI** and **VCI**, the **Encapsulation**, and **Modulation** type. Click **Apply** to continue. (Consult your ISP on the proper settings, if necessary.)



- Step 4 Select **Yes, I want to restart my computer now** and click **Finish** to have new settings take effect.

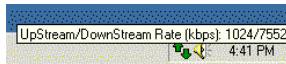


Chapter 7

Verify Your Connection






7.1 Link Status

During driver installation, a DSL Modem monitoring program is also installed on your system. Whenever you start Windows, the utility is launched automatically with its icon loaded in your system tray to indicate whether the physical connection between your ALE070 modem and the ISP is up or down.



If the DSL Modem icon does not appear in your system tray, you can manually start the utility by double-clicking the **GlobeSpan DSL Modem** icon in the **Control Panel**. This opens the **GlobeSpan DSL Modem Control Panel** and launches the utility icon at the same time.

The DSL Modem icon consists of two arrows. The upward arrow indicates data is being transmitted whereas the downward arrow indicates data is being received. The link status can be determined as follows:

Icon	Status
	The arrows are flashing yellow alternatively to indicate training is in progress. The ALE070 modem is trying to connect to the ISP.
	Connection is established but no data traffic or ADSL connection is not established. To identify the connection status, you can move the cursor over the icon to see pop-up text. If the connection is down, DSL Modem: No signal is shown; otherwise upstream/downstream rate is shown.
	The ALE070 modem is transmitting/receiving data.
	The ALE070 modem is transmitting and receiving data.
	The ALE070 modem is disconnected or an error occurs.

The physical link over ADSL line is essential before you make connection to ISP or corporate networks. If your ADSL connection fails, connect your ISP or system administrator for troubleshooting.

7.2 DSL Modem Control Panel

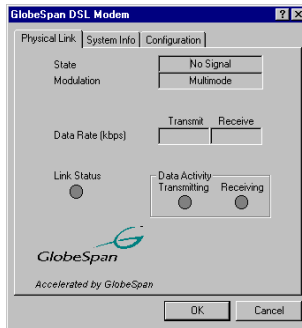
When your ADSL session is active, you can view specific information over your ADSL link. Right-click the DSL Modem icon and click **Open Control Panel**. This pops up the **GlobeSpan DSL Modem Control Panel** with three tabs available :



Physical Link

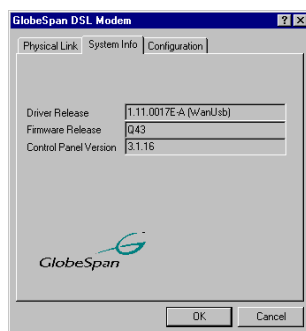
This tab displays your ADSL connection state and the modulation type. Data rates indicates the maximum transmit and receive rates in kbps on the ADSL line.

The circle of Link Status flashes when an ADSL link is attempted. The transmitting/receiving circle flashes when transmitting/receiving data.



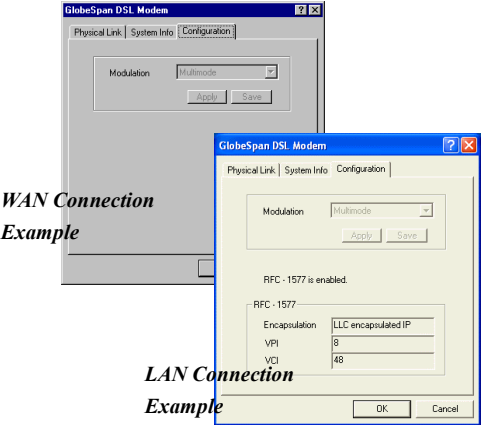
System Info

This tab provides information on the driver, firmware and Control Panel.



Configuration

This tab is grayed out. To customize your configuration, refer to “Chapter 6 Customize Settings” for more information.



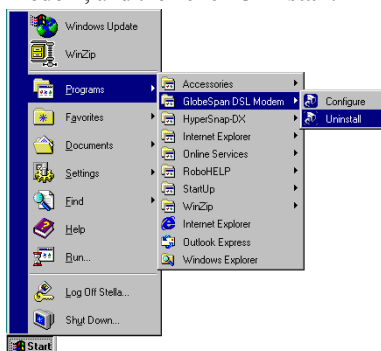
Chapter 8

Removing and Upgrading Driver

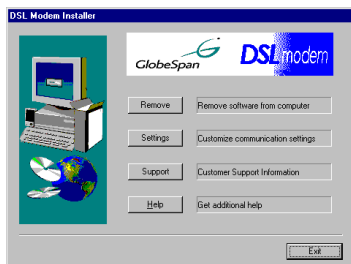
8.1 Removing Driver

The ADSL USB Modem is a hot swapable USB device. You may plug it in and out without powering down your computer. However, this does not mean that both driver and software are removed when plugging out the USB device. Should you need to remove the ALE070 ADSL USB modem, follow the steps below.

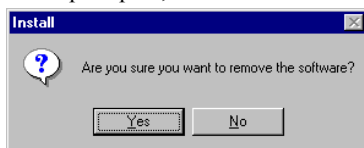
- Step 1 Click the **Start** menu, point to **Programs, GlobeSpan DSL Modem**, and then click **Uninstall**.



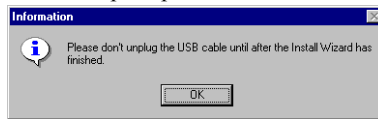
- Step 2 Click **Remove**.



- Step 3 When prompted, click **Yes** to remove the software.

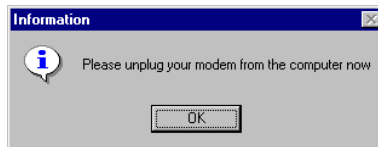


- Step 4 When **Information** message appears, **do not** unplug the ALE070 modem as prompted. Click **OK**.



- Step 5 When prompted, unplug the ALE070 modem from your computer now, and then click **OK**.

Note: Make sure you unplug the ALE070 modem in this step; otherwise, the ALE070 modem can not be removed completely.



- Step 6 Select **Yes, I want to restart my computer now** and click **Finish**.



Note: If you need to reinstall the ALE070 modem, make sure to reconnect your ALE070 modem **after** restarting and entering the system; otherwise, the system will not be able to detect the ALE070 modem. After the system detects the device, you can follow the installation instructions in this manual to complete the driver installing.

8.2 Upgrading Driver

Periodically, you may need to upgrade the ALE070 ADSL USB modem's driver when a newer version is available. Check our Web site for information about the latest driver upgrades. To perform driver upgrade, you should follow the procedures outlined as below:

1. Download the required version of the driver from the Web site and save the file to your local PC environment.

2. Uninstall your current version of driver as describe above in this chapter. During which you will be prompted to unplug the ALE070 modem and restart the computer.

Note: Before you uninstall the driver, view the current configuration via **Start > Programs > GlobeSpan DSL Modem > Configure > Settings**. Write down your ADSL modem settings, e.g., VPI/VCI values, encapsulation, etc. You will need to provide these information when installing the new driver.

3. After restarting, reconnect the ALE070 modem and install the new driver you have downloaded. For detailed procedures, refer to driver installation chapters relevant to your operation system in this manual.

9.1 Hardware Specifications

- Local Interface: USB Interface
- Automatic-rate adaptation or programmable in step of 32Kbps
- Line code: DMT
- Chipset: GlobeSpan
- ADSL Standard Compliance:
 - ANSI T1.413 Issue 2
 - ITU-T G.992.1 (G.DMT)
 - ITU-T G.992.2 (G.Lite) .
- Connector: RJ-11

9.2 Software Specifications

- RFC 1483 : Multiprotocol Encapsulation over ATM (Ethernet over ATM)
- RFC 1577 : Classical IP over ATM (IP over ATM)
- RFC 2364 : PPP over ATM (PPP over ATM)
- RFC 2516 : PPP over Ethernet (PPP over Ethernet).

FCC Regulations – Part 15 and 68

The Federal Communications Commission (FCC) of the United States restricts specific uses of modems, and places registration responsibilities on both the manufacturer and the individual user:

1. The modem may not be connected to a party line or to a coin operated telephone.
2. The modem manufacturer must make any repairs to the modem to maintain valid FCC registration.
3. Notification to the telephone company is no longer required prior to connecting registered equipment, but upon request from the telephone company, the user shall tell the telephone company which line the equipment is connected to as well as the registration number and ringer equivalence number of the registered protective circuitry. FCC information is printed on a label on the bottom of the modem.

IC (Industry Canada) Notice

This digital apparatus does not exceed the Class B limits for radio noise emissions from digital apparatus set out in the radio interference regulations of Industry Canada (formerly Canadian Department of Communications).

Notice: The Industry Canada (formerly Canadian Department of Communications) label identifies certified equipment. This certification means that the equipment meets certain telecommunications network protective, operational and safety requirements. The department does not guarantee the equipment will operate to the user's satisfaction.

Before installing this equipment, users should ensure that it is permissible to be connected to the facilities of the local telecommunications company. The equipment must also be installed using an acceptable method of connection. In some cases, the company's inside wiring associated with a single line individual service may be extended by means of a certified connector assembly (telephone extension cord). The customer should be aware that compliance with the above conditions may not prevent degradation of service in some situations.

Repairs to certified equipment should be made by an authorized Canadian maintenance facility designated by the supplier. Any repairs or alterations made by the user to this equipment, or equipment malfunctions, may give the

telecommunications company cause to request the user to disconnect the equipment.

Users should ensure for their own protection that the electrical ground connections of the power utility, telephone lines and internal metallic water pipe system, if present, are connected together. This precaution may be particularly important in rural areas.

Caution: Users should not attempt to make such connections themselves, but should contact the appropriate electric inspection authority, or electrician, as appropriate.